



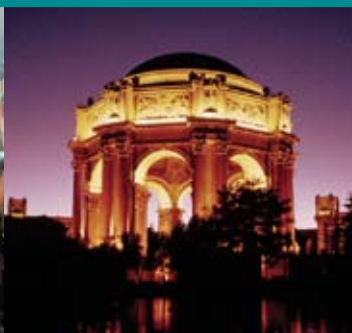
TAUBE
PHILANTHROPIES

TAUBE FOUNDATION FOR
JEWISH LIFE & CULTURE

TAUBE FAMILY FOUNDATION

Foundation Report

2008 – 2010





Taube Philanthropies
Foundation Report
2008–2010

Taube Foundation for Jewish Life & Culture
Taube Family Foundation

Our Mission

GUIDED BY A LONG-TERM COMMITMENT to both secular and Jewish life, the Taube Philanthropies provide direct and indirect support to projects and institutions that advance the philosophies and vision of its founder, Tad Taube. Central to these are 1) the concepts and principles of a free, democratic society, including open economic enterprise, self-reliance, academic freedom of inquiry and limited government; and 2) programs that support Jewish heritage, survival and cultural celebration. Two separate grant-giving foundations constitute Taube Philanthropies.

The first, the Taube Family Foundation (TFF), has for nearly 30 years provided leadership for and underwritten significant educational, cultural and civic nonprofit organizations of wide variety and consequence. These have focused their services primarily in the San Francisco and Greater Bay Area communities.

The second, the Taube Foundation for Jewish Life & Culture (TFJLC), was established in the year 2001 to 1) help ensure the survival of Jewish life and culture in the face of unprecedented global threat to the Jewish people, especially in Israel; 2) study and promote Jewish peoplehood for the purpose of strengthening Jewish identity and sustaining Jewish heritage; 3) celebrate current Jewish achievement in all aspects of human endeavor; and 4) work for the reform of Jewish institutions, which have often become disconnected from the people they serve.

Taube Philanthropies, while primarily focused on local programs in the San Francisco Bay Area, extend their support to Europe and Israel. Areas of concentration in this country and internationally include education and scholarship; cultural renewal and heritage preservation; the arts; public policy research; and institution building.

COLLABORATIVE GIVING

Taube Philanthropies believes strongly in collaborative funding, recognizing that bringing donors together to pool their resources can achieve much greater impact than a single charitable entity may otherwise be able to accomplish. “Collaborative funding is the wave of the future,” says Tad Taube.

Numerous examples of collaborative giving follow in this report – most prominently, between Taube Philanthropies and the Koret Foundation, as the two foundations share similar values and missions. In addition, Taube Philanthropies partners with more than thirty donors and foundations to provide multi-year support of the Jewish Heritage Initiative in Poland (JHIP). Focusing large sums of funds on ambitious programs such as the JHIP helps maximize the impact of each donor’s gift.



Taube Foundation for Jewish Life & Culture*

DIRECTORS

Hon. Tad Taube, *Chairman*

Dianne Taube, *Vice Chair*

Jeffrey Farber

Robert Friend

Mark Reisbaum

Abraham Sofaer

Vivek Ranadivé

Sigmund Rolat

Billy Russell-Shapiro

Vered Shemtov

Maciej Siekierski

Jeffrey H. Wachtel

Ernest H. Weiner

ADVISORY BOARD MEMBERS

Peter Berkowitz

Phyllis Cook

Susan Diamond

James A. Donahue

Arnold Eisen

Charles Esserman

Debbie Findling

Abraham Foxman

Anita Friedman

Shelley Hebert

Christopher Kerosky

Nathan S. Lam

Skip Law

Moses Libitzky

Brian Lurie

Bernard Osher

Stephen S. Pearce

Daniel Pipes

Irving Rabin

HONORARY MEMBERS

Theodore Bikel

Hon. Aleksander Kwasniewski

Hon. Ronald S. Lauder

Hon. George Shultz

Elie Wiesel

EXECUTIVE DIRECTOR

Shana Penn

PERSONNEL

(BAY AREA & WARSAW)

Jolee Boyd

Konstanty Gebert

Alice Lawrence

Helise Lieberman

Magdalena Matuszewska

Yale Reisner

Carol Stulberg

Debra Weinstein

Ron Wexler

* TFJLC is a supporting foundation of the Jewish Community Endowment Fund of the Jewish Community Federation of San Francisco, the Peninsula, Marin and Sonoma Counties.

Taube Family Fund for Jewish Life

DIRECTORS

Tad Taube

Anita Friedman

Dianne Taube

Jeffrey Farber

Abraham Sofaer



FOUNDATION
REPORT

Chairman's Message



Dear Friends and Colleagues:

I am pleased to present our mission statement and guiding principles for the Taube Philanthropies, which are comprised of and implemented by the work of the Taube Family Foundation and the Taube Foundation for Jewish Life & Culture.

These philanthropies and their underlying philosophies are shaped by the experiences of my life, by my good fortune to have been an immigrant to the United States from Poland, just weeks ahead of the Nazi terror unleashed on Poland and the world in 1939. I have witnessed the oppression of totalitarian regimes and I have benefited from the gifts of freedom and opportunity available to those of us who live in the greatest democracy the world has ever experienced.

To a large extent, a democracy such as ours has to be affirmed and nurtured by its people—in the case of Americans, the most generous of any population on earth. As an immigrant and direct beneficiary of American democracy, I have tried to fashion my own affirmation through the work and philosophies represented by Taube Philanthropies.

Please join us in celebrating our American and our Jewish heritage. We welcome your participation, your inquiries and your suggestions.

A handwritten signature in dark ink, appearing to read "Tad Taube".

Tad Taube
Chairman



Grantmaking Highlights

Bay Area and United States

Taube-Koret Campus for Jewish Life

The doors to the Taube-Koret Campus for Jewish Life in Palo Alto, California, are now wide open—after seven years of planning, fundraising, and construction. The \$302 million, 8.6-acre campus expects one million visits a year and is anchored by a world-class community center, the Oshman Family Jewish Community Center; a progressive new senior living community, the Moldaw Family Residences; and the Richard and Rhoda Goldman Sports and Wellness Complex.

The Taube-Koret Campus for Jewish Life is a collaborative initiative founded in 2001 by the Albert L. Schultz Jewish Community Center (now the Oshman Family JCC) in Palo Alto, the Jewish Home in San Francisco, the Jewish Community Federation, and local community leaders. The Taube and Koret Foundations each contributed \$10 million—among their largest gifts ever to a Jewish program.

Already 3,000 people have joined the JCC, putting the facility ahead of projections and well on its way to its 2012 goal of 10,000 members. In July 2009 the JCC began conducting tours of the campus, introducing visitors to this welcoming, innovative, multigenerational destination, where individuals and families can live, learn, play and connect. From a pre-school to a teen center to senior living, the Campus is a nexus of Jewish life. Tables and benches set among palm and olive trees offer a village environment to stimulate connection and community involvement.

The Campus is already transforming the region's Jewish community and energizing the Palo Alto area and all its residents, embodying the idea that as a community, people of all ages living together in healthier and more meaningful lives.



Gala in August 2009 celebrating the opening of the Taube-Koret Campus for Jewish Life.



Gladstone Institutes Taube-Koret Center for Huntington's Disease Research

The J. David Gladstone Institutes have joined forces with Taube Philanthropies and the Koret Foundation to initiate a groundbreaking research program aimed at preventing, treating, and curing Huntington's Disease and related neurodegenerative diseases such as Alzheimer's. The Taube-Koret Center for Huntington's Disease Research has been established at the Gladstone Center for Translational Research at Mission Bay, California, with \$3.6 million in funding from the two foundations.



Juddson, Dianne and Tad Taube (left to right) at the commemoration of the Taube-Koret Center for Huntington's Disease Research.

"We believe that the focus and evolving new technologies of the HD Cure 2020 Program provide a real chance to close in on a cure," says Tad Taube. "It is our hope that Gladstone's depth of understanding about how Huntington's Disease progresses, combined with a well-defined and integrated therapeutic screening strategy, will enable real progress to be made toward treating or curing this devastating disease, as well as related neurodegenerative diseases."

The California Academy of Sciences

The California Academy of Sciences opened at its new home in Golden Gate Park in the fall of 2008. This model of conservation, environmental stewardship, and "green" architecture is one of the ten largest natural history museums in the world, and each year over two million guests are welcomed into its energy-efficient halls.

The Academy's Koret-Taube Education Center houses high-tech classrooms and laboratories, as well as the Naturalist Center, which encompasses a library, a catalogue of scientific specimens, and technology resources for educators and scholars. The Koret-Taube Education Center, another collaboration by Koret Foundation and Taube Philanthropies, is designed to further strengthen the Academy's commitment to scientific research and interactive education.



Main entrance to the California Academy of Sciences.

The Contemporary Jewish Museum

Taube Philanthropies, Koret Foundation and the Contemporary Jewish Museum have established a strong partnership linking these three community-focused institutions.



Both Taube and Koret maintain deep interests in enriching Jewish cultural identity; the Museum's mission is to engage with Jewish culture in new and exciting ways. The synergy of these organizations benefits the wider community.

The Contemporary Jewish Museum provides a gateway for diverse audiences to discover and explore new ways to interact with tradition. Within a specially designed space, the Museum's ambitious programs inspire visitors to enhance the age-old understandings that comprise the fabric of Jewish peoplehood.

The Taube-Koret Grand Lobby provides a dramatic entry to the Museum. Upon entering through the main doors, visitors encounter a space with the look and feel of an early-twentieth-century industrial building. Daniel Libeskind's design is an adaptive reuse of the landmark Jessie Street Power Substation, designed by Willis Polk in 1907. The new building preserved many of the character-defining features of the old one, a symbolic gesture of incorporating the past into a bright future.

By supporting the Museum's exhibitions and operations with a collaborative gift of \$5 million, Taube and Koret are bringing the works of highly insightful and thought-provoking artists to Bay Area audiences and enriching Jewish cultural identity. Designed to attract visitors representing a broad span of ages and backgrounds and to spark renewed interest in Jewish peoplehood, the Contemporary Jewish Museum stands poised to become an ambassador of the Jewish community and a landmark civic presence for generations to come.



The Taube-Koret Grand Lobby welcomes visitors to the Contemporary Jewish Museum.

Stanford Institute for Economic Policy Research: Taube-Koret Conference Center

The Stanford Institute for Economic Policy Research (SIEPR) is an academically oriented economic policy research organization that unites outstanding economic talent from many disciplines at Stanford University. SIEPR faculty and researchers study a variety of economic policy-oriented issues to advise and influence policymakers who are looking for solutions to a number of complicated concerns. Seminal research by SIEPR is reported in periodic Policy Briefs, a project underwritten by Taube Philanthropies.

To support the Institute's endeavors, the Taube and Koret Foundations have supported the construction

Architect's model of the new building at Stanford for the Stanford Institute for Economic Policy Research.



(now underway) of a new building at Stanford. This new building will provide state-of-the-art meeting and office spaces, to be designated as the Koret-Taube Conference Center and two Koret-Taube conference rooms.

San Francisco Jewish Community Center Maccabi Games

The JCC Maccabi Games can be called the Olympics for Jewish teens, but the Games also serve a purpose beyond athletic competition, promoting community involvement, teamwork, and pride in being Jewish. The Taube Foundation helped support the August 2009 events with a grant of \$100,000 over two years.

In 2009, for the first time, the Games were anchored in an urban area, with the bulk of the events held at the University of San Francisco. Other venues included Golden Gate Park (for baseball, tennis and soccer), Serra Bowl in Daly City (for bowling), and two San Francisco prep schools, Saint Ignatius and Sacred Heart Cathedral (for basketball and track and field). The golf competition was held on three courses: Lake Merced Golf Course and Presidio Golf Club in the San Francisco area and the Meadows Club in Fairfax.

The JCC Maccabi Games are the largest Jewish teen event in the world, with over 6,000 participants each summer. Over 100,000 teens have benefited from the JCC Maccabi Games since 1982.



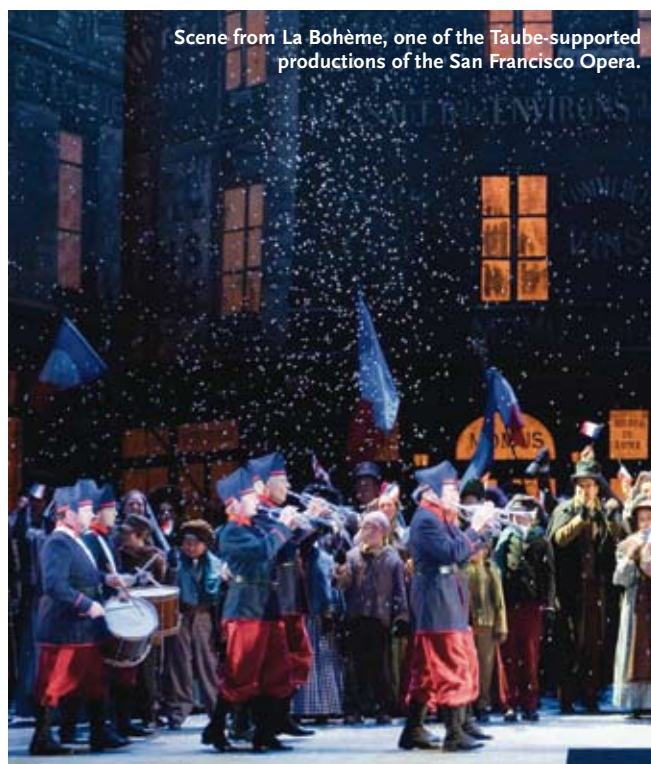
LUIS ZAVALA PHOTOGRAPHY, COURTESY OF JCCSF

One of the dramatic soccer moments of the JCC Maccabi Games.

San Francisco Opera Media Suite and Production Sponsorships

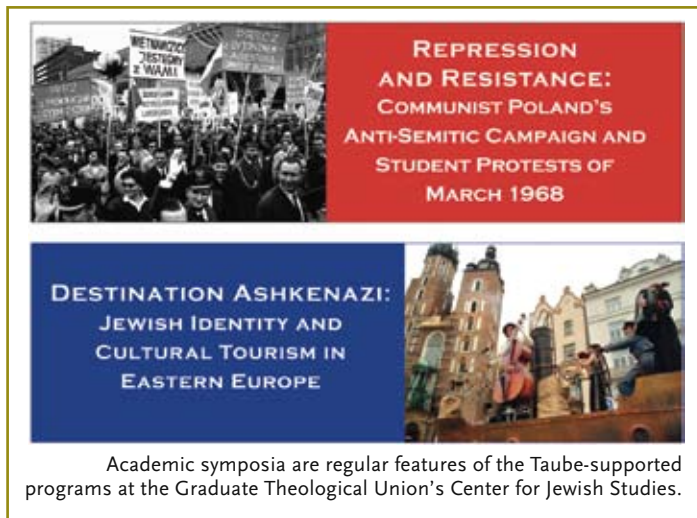
Taube Philanthropies has cosponsored the development of the innovative San Francisco Opera Koret-Taube Media Suite, a broadcast system initiative that fulfills the Opera's mission to bring world-class opera to a wider audience. For 2008-2010, Taube committed \$300,000 toward the Media Suite and \$375,000 toward production support of four operas: *La Bohème*, *Tosca*, *The Girl of the Golden West*, and *Trittico*.

Dianne Taube, Vice Chair of the Taube Foundation for Jewish Life & Culture, serves on the Opera Board of Directors, a position she has held since 2003.



Graduate Theological Union Center for Jewish Studies

The three-year Taube grant to the Richard S. Dinner Center for Jewish Studies (CJS) at the Graduate Theological Union strengthens CJS programs in numerous ways. The grant is enormously helpful in providing graduate fellowship support on the M.A. and doctoral level, which has enabled the department to compete for the best students nationally. For the first time, the Center for Jewish Studies is also able to fund summer research and study: during the summer of 2009, five doctoral students traveled to Eastern Europe and New York to work on their Yiddish language skills and research Eastern European Jewish culture. For 2010, CJS plans a more ambitious program: With help from visiting scholar Shana Penn, CJS will offer a course on *Polin: From Mythical Origins to Contemporary Revival*, in which students will immerse themselves in the history and present-day realities of Polish Jewry and develop research topics in the field. The course will be followed by a research trip to Poland in the summer of 2010, in which students will mobilize available resources to further their research projects. The research projects will be presented to the group in the fall of 2010.



With relevant language study, curricular offerings, conferences and lectures, and research travel, CJS students can now develop a rich and multi-faceted appreciation of the Polish Jewish experience, past and present. Taube support, made in collaboration with a three-year grant from the Koret Foundation, has significantly enriched the entire academic program and administration of the Center for Jewish Studies at the Graduate Theological Union.

Commonwealth Club Series on American Values

The Commonwealth Club of California is the nation's oldest and largest public affairs forum, offering its more than 18,000 members over 400 annual events on topics ranging across the spectrum of politics, culture, society and the economy.

As a nonprofit, nonpartisan educational organization, the Commonwealth Club relies for support on its membership, the Business Council, and foundation grants in order to continue its mission to foster open public discussion in the San Francisco Bay Area and throughout the nation via radio, Internet and television.



Sally Pipes, one of the distinguished speakers in the Commonwealth Club's American Values Series.

The Taube Foundation committed \$100,000 over four years to support a series of Commonwealth Club lectures in the Taube American Values Series. The goal of the series is to bolster civic discourse leading to a broader understanding and reinvigoration of American democratic values.

American Values speakers have included George Shultz, John Shoven, Alberto Gonzales, David Horowitz, Alan Simpson, David Davenport, Sally Pipes and William D. Eggers.



The Koret-Taube Jewish Peoplehood Initiative

The promotion of Jewish Peoplehood is integral to Jewish continuity. The Koret-Taube Jewish Peoplehood Initiative supports programs that foster a sense of identity, belonging to, involvement with and commitment to the Jewish people and the global Jewish community.

Additionally, the historical legacy of the Jewish people has undeniably served as the cornerstone of Western civilization. That cultural heritage is embodied in the Judeo-Christian values that form the underpinnings of American society.

The Koret-Taube Jewish Peoplehood Initiative explores and promotes programs that define Jewish Peoplehood in the context of these cultural and historical influences as they impact Jewish, Western and global cultures.

Of particular funding interest are collaborations with and among Jewish organizations, which celebrate our Jewish cultural legacies and advance a shared, enduring vision of Jewish continuity.

Peninsula Jewish Community Center in Foster City

The Peninsula Jewish Community Center in Foster City, California, received a \$500,000 four-year grant in August 2009 to launch the Koret-Taube Initiative on Jewish Peoplehood. The grant will support innovative expressions of Jewish culture, intellectual engagement with Jewish history, thought, and peoplehood, and building bridges with the people and State of Israel.



Tad Taube (left) and Warren Hellman at the Jewgrass concert, launching the Jewish Peoplehood Initiative.

The Peninsula Jewish Community Center was selected for this initiative because of its demonstrated commitment to Jewish programming and because the center has developed an audience for innovative Jewish programs that have broad appeal. Thanks to the Koret-Taube Initiative on Jewish Peoplehood, the center will provide the highest caliber of stimulating and enriching Jewish programming, encompassing film, music, lectures, art, history, and explorations of contemporary Israel. Working in collaboration with other local JCCs and universities, the PJCC will offer the community a variety of opportunities and avenues to connect with all things Jewish.

Next Chapter Project: A Taube-JFCS Collaboration

The Next Chapter Project brings together Bay Area Holocaust survivors and high school students in collaboration with genealogy researchers from Warsaw in an innovative learning service program that connects young and old, the past and the present, and family histories with their contemporary communities. Students interview survivors from Poland, while Warsaw genealogists provide documentation on 1) each survivor's family lineage and birthplace in Poland; 2) how the memory of each survivor's prewar Jewish community is being preserved today; and 3) whether Jewish communities have come back to life in these given cities and towns. The oral histories and documents are assembled and published as individual albums for each of the survivor and student participants; additionally,



Teens from the Next Chapter Project, along with two of their parents and Holocaust survivor Annie Glass, on their tour of the Jewish Historical Institute, Warsaw.



master collections are archived at Yad Vashem and the Warsaw Jewish Historical Institute, and presented at the annual California Day of Holocaust Remembrance.

The Next Chapter Project is co-organized by Taube and Jewish Family and Children's Services of San Francisco, in collaboration with Congregation Emanu-El and the Holocaust Center for Northern California.

In 2009, the Next Chapter Project was extended from semester-long study and dialogue among Bay Area high school students, Holocaust survivors and their families, in concert with Warsaw genealogists, to a follow-on cultural immersion program that enabled participants to journey to Poland, visit the survivors' native homes, and witness Ashkenazi Jewish tradition and culture in the places where it existed and is being revived today.

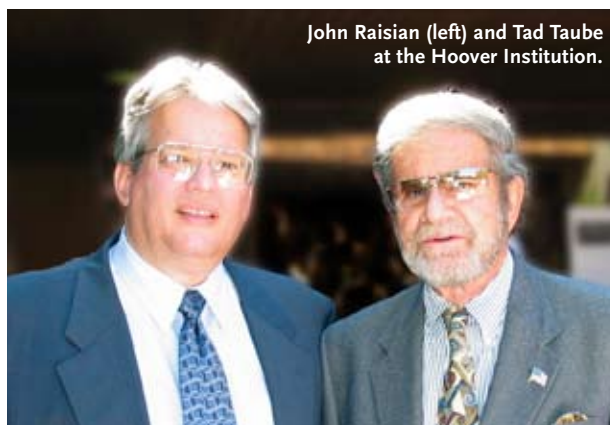
Eight of the 22 Bay Area teens who participated in the Next Chapter Project traveled to Poland. They were joined by Annie Glass, a Holocaust survivor who had been interviewed for the Project. The trip, organized by the Taube Foundation, gave the participants a firsthand look at the renaissance of Jewish life in Poland and included a memorable visit to the Emanuel Ringelblum Jewish Historical Institute in Warsaw, the world's largest repository of Polish Jewish history and the first research institution to document the Holocaust immediately following World War II. The trip was funded by the San Francisco Jewish Community Federation.



Holocaust survivor Annie Glass (right) views documents from the Emanuel Ringelblum Archives at the Jewish Historical Institute in Warsaw.

Tad and Dianne Taube Hoover Institution Directorship Fund

John Raisian, the Tad and Dianne Taube Director of the Hoover Institution and a senior fellow, assumed his position as executive director in 1989. John is an economist with a specialty in national and international labor market and human resource issues. John joined the Hoover Institution as a fellow in 1986, served as associate director from 1986–88 and as deputy director from 1988–89. His current policy interests include the application of economic principles to public policy formation, the appropriate role of government in society, and the importance of human capital accumulation for productivity growth and economic prosperity. In 2008, the Taube Foundation committed \$5 million to endow the Hoover Institution Directorship Fund.



John Raisian (left) and Tad Taube at the Hoover Institution.



Executive Director's Message



Dear Friends and Colleagues:

We are proud to present the recent achievements of the Jewish Heritage Initiative in Poland (JHIP). The JHIP is committed to strengthening the institutional life of Polish Jewry and to broadening the Jewish world's understanding of peoplehood as viewed through the historical role of Polish Jews in the life and culture of Jewish people everywhere. It does this by supporting and creating educational, communal and cultural programs to a growing Jewish population in Poland, and linking Polish Jewry to Diaspora communities in the United States and Israel.

Since its inception in 2004, the JHIP has become a major force in the revitalization of Jewish life in Poland, supporting more than 70 programs and five new educational initiatives that meet the dual needs of strengthening Jewish communities in Poland and linking American Jews to their Ashkenazi heritage through scholarship, heritage restoration, educational scholarships, traveling exhibits, and study tours. Our newest initiatives include the Polish Jewish Heritage Tour Program and the Jewish Genealogy and Family Heritage Center, developed for Jewish youth and adults worldwide who are interested in their Polish roots and also eager to celebrate the Jewish renewal taking place in today's democratic Poland. By linking living heritage to the Polish past, JHIP programs bring history forward for future generations in critical ways that inform identity and peoplehood.

A handwritten signature in dark ink that reads "Shana Penn".

Shana Penn
Executive Director



Grantmaking Highlights

Jewish Heritage Initiative in Poland

Construction Begins on the Museum of the History of Polish Jews

Several hundreds gathered on June 30, 2009 at the historic Warsaw Ghetto Uprising Memorial to mark the official start of construction of the Museum of the History of Polish Jews. Located across from the Memorial on land donated by the City of Warsaw, the Museum is scheduled to open in 2012. After an international architectural design competition, won by the renowned Finnish architect Rainer Mahlamaki, the Polish federal government and the city of Warsaw committed a combined \$86 million and the donated landmark site to support building the Museum and assuring its basic operating costs. Taube Executive Director Shana Penn addressed the audience: “This multimedia narrative museum and cultural center is the first and only institution to present the history of Polish Jews and the rich civilization they created over the course of almost 1,000 years. This extensive period of Jewish life in Poland is not only the foundation of today’s global Jewry, but also serves as the underpinning of Judeo-Christian Western culture.”



Architect's model of the Museum of the History of Polish Jews, being built in Warsaw.

Jewish Genealogy & Family Heritage Center at the Emanuel Ringelblum Jewish Historical Institute, Warsaw

With the lead support of Taube Philanthropies, the Jewish Genealogy & Family Heritage Center is undergoing exciting changes. The most visible change is the construction of a new physical space in the Jewish Historical Institute's Blue Tower, where Warsaw's Great Synagogue stood until destroyed by the Nazis. The enlarged quarters will be furnished and fully networked into the Jewish Historical Institute (JHI) by year's end.

A complex database for the Center—and the entire JHI—has been commissioned and is near completion. This database will make all JHI collections accessible for the first time in 62 years. It has been designed with special features to locate any information held in JHI's collections—from archival documents to books, from photos to painted portraits—about a given individual. Family trees will also be included. After final testing, this unique database should be operational by December 2009. An associated website is also being designed to make data available to the public, to share new discoveries and to facilitate contact with the Center.



The Genealogy Center has a network of historians and archival researchers throughout Poland who assist in conducting local research. The Center's newest relationships extend archival reach to Belgium, Belarus and northwestern Ukraine. Genealogical inquiries received by the Museum of the History of Polish Jews will also now be directed to the Genealogy Center.

The Center is interactive. Not only do clients get answers to their questions, they are encouraged to share their own materials with the Center. The sole evidence of a family, event or institution is often not found in archives, but in private hands. Such items reflect the fate of families, teaching us in an intimate way about the major trends in Polish Jewish history and bringing that history to life. Thus, the Center also helps recover Polish Jewry's—Poland's—lost memory.



Yale Reisner, the Chief Genealogist of the Jewish Genealogy & Family Heritage Center at the Jewish Historical Institute, Warsaw.

Centrum Taubego: Taube Center for the Renewal of Jewish Culture, Warsaw

The Taube Foundation is proud to announce the official registration in Poland of its Jewish Heritage Initiative. Under the direction of Jewish community leader Konstanty Gebert, the Centrum Taubego Odnowy Życia Żydowskiego W Polsce (the Taube Center for the Renewal of Jewish Culture), is located in the Emanuel Ringelblum Jewish Historical Institute in Warsaw and shares offices with the Jewish Genealogy & Family Heritage Center. The Centrum Taubego staff includes Education Director Helise Lieberman, former principal of the Lauder Morasha Day School, and Program Coordinator Magdalena Matuszewska, a doctoral candidate in Hebrew studies at Warsaw University. Program activities of the Centrum Taubego include Seed Grants in Jewish Studies Publishing, Genealogy and Heritage Tourism, and Education on Jewish Peoplehood.



Members of the Taube Foundation staff from the U.S. and Poland enjoy time together in Warsaw.



Poland Jewish Heritage Tours Launched

For one thousand years, Poland was the cradle of Jewish civilization, and even today, the majority of world Jewry can claim their ancestral roots there. In response to an unmet need for connecting with these roots, Taube Philanthropies launched Poland Jewish Heritage Tours (www.polandjewishheritagetours.com) in Spring 2009. Poland Jewish Heritage



The Friedman-Tartakovsky family in Poland.



Tours works from the premise that this great Ashkenazi legacy must be retained as a vital dimension of contemporary Jewish life, and is made accessible to participants through distinctive and much-lauded cultural tours.

These customized tours celebrate a millennium of Jewish history through visits to Poland's historical sites; participation in genealogical field research about family histories; celebrations of religious and secular traditions; meetings with Jewish leaders, politicians and the media; and outings to cultural events and historic commemorations such as Yom HaShoah and the annual April 19th ceremony honoring the heroes of the Warsaw Ghetto Uprising.



The Cantors' Assembly of the United States performs in front of the Warsaw Ghetto Memorial as part of their mission to Poland.

Today, Jewish culture in Poland is experiencing an impressive renaissance. Poland Jewish Heritage Tours offers the opportunity to witness and participate in the exciting events that comprise this cultural revival, from the summer Jewish Culture Festival in Krakow, which is the largest festival of its kind in the world, to the autumn literary festival in Warsaw, which celebrates the anniversary of Isaac Bashevis Singer's birthday.

Poland Jewish Heritage Tours creates unique itineraries, intellectually stimulating experiences and spiritually uplifting heritage tours of Jewish Poland to people of all ages and backgrounds who are interested in learning more about Ashkenazic Jewish heritage, their own family histories, and the current revival of Jewish life and culture in Poland.

Taube 2009 Summer Tour to Poland

From June 30–July 6, 2009, the Taube Foundation for Jewish Life & Culture led a distinguished group of American Jewish community leaders on a heritage tour of Poland to mark the 20th anniversary of the 1989 fall of Communism, the birth of democracy, and the renewal of Jewish life. There was much to celebrate on this journey: the establishment of a Sister Cities relationship between Krakow and San Francisco (San Francisco's first Sister City in Eastern Europe); the start of construction of the Museum of the History of Polish Jews on



Participants in the 2009 Taube Tour to Poland walk along the streets of Krakow.



the sacred site where the Warsaw Ghetto Uprising was valiantly fought in 1943; and a half-decade of intellectual and material investments by Taube Philanthropies and its partners in strengthening Jewish life and civil society through programs in heritage preservation, Jewish studies, genealogy and cultural tourism, youth and adult education, and cultural innovations such as the stunning Galicia Jewish Museum.

The Taube Tour participants were witness to a Jewish miracle of our times as they enjoyed the splendid attractions of the 19th annual Krakow Jewish Culture Festival, chatting with Jewish activists and leaders, visited impressive monuments to the glory that was Polish Jewry and the horrible sites of its extermination by the Third Reich, and experienced its unexpected rebirth,

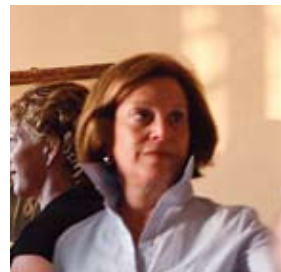
Taube summer tours to Poland are shared annually with our philanthropic partners, who join us in our experiences and provide us with multi-year funding.



Taube Tour participants are led on a tour through the Jewish cemetery in Krakow.

Spotlight on Skip and Linda Law

Two of the Taube Foundation's valued partners are Skip and Linda Law of Atherton, California. Skip is retired from McKesson Corporation, where he was responsible for the overall management and planning of McKesson's real estate worldwide. He now serves on the Advisory Board of the Taube Foundation for Jewish Life & Culture. Linda is chair of the International Advisory Board of the Real Estate Academic Initiative, Harvard University. After touring Poland with the Taube Foundation in 2007, the Laws underwrote the summer 2009 expedition.



San Francisco and Krakow, Sister Cities, 2009

On July 2 in Krakow's majestic City Hall, more than 200 people gathered to witness the signing of a Sister City agreement between Krakow and San Francisco, hosted by the mayor of Krakow, Jacek Majchrowski. Representing the City of San Francisco were Matthew Goudeau, Protocol Officer from the Office of Mayor Gavin Newsom, and Honorary Consuls for the Republic of Poland in the Bay Area Tad Taube and Christopher Kerosky. The audience included nearly 100 San Francisco Bay Area guests, among them members of the Polish American community and tour groups organized by the Taube Foundation for Jewish Life & Culture, the Jewish Community Center of San Francisco and Lehrhaus Judaica, and the Next Chapter Project of the Jewish Family and Children's Services. The San Francisco-Krakow relationship will foster business, civic and cultural links between the two cities.



Honorary Consuls for the Republic of Poland in the San Francisco Bay Area Tad Taube (left) and Christopher Kerosky (right) stand with the Mayor of Krakow Jacek Majchrowski who holds the signed agreement establishing the Sister Cities relationship between Krakow and San Francisco.

This autumn, Mayor Gavin Newsom hosted a reception honoring the new Sister Cities relationship on October 21 in San Francisco's City Hall.



Reception at San Francisco City Hall to celebrate the San Francisco-Krakow Sister Cities agreement. From left to right, Honorary Consuls Christopher Kerosky and Tad Taube, Mayor Gavin Newsom, Polish Consul General in Los Angeles Joanna Kozinska-Frybes, Hon. George Shultz and Charlotte Shultz.



Nineteenth Annual Jewish Culture Festival in Krakow Honors Tad Taube

In front of a cheering crowd of 15,000 gathered for the July 4 closing night outdoor concert, Festival Director Janusz Makuch presented Tad Taube with an award for his ongoing and major support of the Festival. Also receiving an award for support was Sigmund Rolat, co-chair of the Board of the Museum of the History of Polish Jews and a member of the Taube Advisory Board.



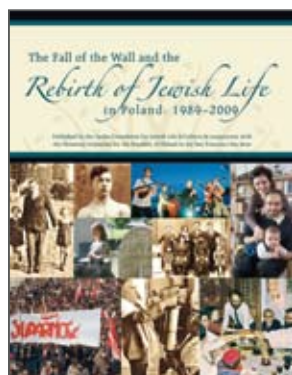
Tad Taube and Shana Penn with the award given to Tad for his ongoing support of the Jewish Culture Festival in Krakow.



Closing night concert of the Jewish Culture Festival.



New Publications



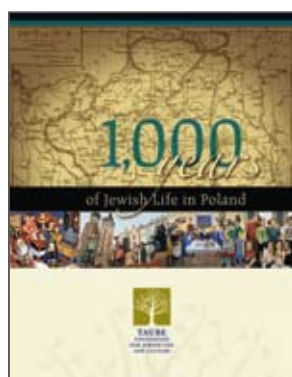
The Fall of the Wall and the Rebirth of Jewish Life in Poland: 1989-2009

This collection of personal essays by twelve leading Jewish thinkers and activists in Poland provides invaluable insights into modern Polish Jewish history. Each contributor reflects, from their individual generational standpoints and personal experiences, on how their nation's democratic aspirations made the reclamation of Jewish life possible. It enables us to learn about Poland's past, present and future from inside the culture, which today is free, democratic and a member of NATO and the European Union, an ally of the U.S. and Israel, and protective of its ethnic minorities.



Jewish Heritage Initiative in Poland Special Report

This newsletter captures in word and image the events in Poland in the Summer of 2009 in which a distinguished group of American Jewish Community leaders participated. On this 20th anniversary of the 1989 fall of Communism, there was much to celebrate, including the signing of a Sister Cities relationship between Krakow and San Francisco, the start of construction of the Museum of the History of Polish Jews, and the attractions of the 19th annual Jewish Culture Festival in Krakow.



1,000 Years of Jewish Life in Poland

In appreciation of the millennium of Jewish history and accomplishments in Poland, the Taube Foundation asked Konstancy Gebert, director of Centrum Taubego in Warsaw, to assemble an authoritative timeline of the significant events of Jewish life in this country so often limited in modern-day sensibilities as the site of the Holocaust. Beginning with the arrival of Abraham ben Yaakov in the year 960, the timeline follows the rich and complex Jewish history in Poland through the centuries up to the present day.





The Open-Ended Past

Dr. Barbara Kirshenblatt-Gimblett, who leads the Core Exhibition Planning Team of the Museum of the History of Polish Jews, gives a descriptive and provocative interview about the Museum, which will open in 2012 in Warsaw. The interview, illustrated with architectural renderings of the museum, underlines the reasons why the Museum will be, in the words of Tad Taube, “one of the three greatest Jewish museums in the world, alongside the United States Memorial Museum and Yad Vashem.



Compass Guide

Compass, a new and timely guide to Jewish life in Europe, was released this summer by the Westbury Group, an informal network of 20 international Jewish philanthropic organizations and individual funders that support European Jewish initiatives, including the Taube Foundation for Jewish Life & Culture. Compass aims to introduce, inform and enlighten funders about some of Europe’s most vital, innovative, effective and sustainable Jewish organizations and programs. The Taube Foundation joined six other Westbury members in evaluating 110 contenders based on their roles in demonstrating new and effective ways to serve individual European Jewish communities, strengthen Jewish culture in Europe, ensure the richness,

diversity and vibrancy of Jewish life in Europe, facilitate collaboration and cooperation with other minorities, and for their ability to build relationships in mainstream culture. Of the 36 organizations selected for the guide, four were from Poland including the Krakow Jewish Culture Festival, the Galicia Jewish Museum, and the Emanuel Ringelblum Jewish Historical Institute.



Taube Foundation for Jewish Life & Culture

Grant Commitments 2008-2010

BAY AREA, U.S. AND ISRAEL

CORE PROGRAMS

Taube Center for Jewish Life, Jewish
Community Center of San Francisco

Taube Center for Jewish Studies,
Stanford University

Taube-Koret Campus for Jewish Life
United Way

LOCAL CULTURAL PROGRAMS

Commonwealth Club of California

Fine Arts Museum, San Francisco

Friendship Circle

Museo Italo Americano

San Francisco Opera Association

San Francisco Symphony

ACADEMIC & EDUCATIONAL PROGRAMS

ALEPH Rabbinic Studies Program

California Academy of Sciences

Graduate Theological Union Center
for Jewish Studies

Hebrew Union College

Hoover House Circle*

Hoover Institution, support for
Taube Research Fellow Daniel Pipes*

Hoover Institution, support for
Taube Research Fellow David Dalins

Hoover Institution, Tad and Dianne Taube
Directorship Fund*

Hoover Institution, Task Force on
National Security and the Rule of Law*

Humanity in Action internship program

Jewish Community High School of the Bay

Jewish Theological Seminary

KAVOD Fellowship Project

NCSJ Student Educational Experience
in Moscow, with Hillel

New York University Tisch School of the Arts

Nueva School Capital Campaign

Ronald C. Wornick Jewish Day School

Sonoma State University Academic
Foundation

Stanford Language Center,
Stanford University

Stanford University

Tam Institute for Jewish Studies
("Holocaust Denial on Trial" program)

University of California at Davis,
Jewish Studies

JEWISH ORGANIZATIONS

Addison-Penzac Jewish Community Center
of Silicon Valley

Albert L. Schultz Jewish Community Center

American Jewish Committee

Anti-Defamation League

Chabad of Greater South Bay

Chochmat Ha Lev

Congregation Beth El

Congregation Emanu-El

Contemporary Jewish Museum

Hillel Foundation at Stanford University

Institute for Jewish and Community Research

Jewish Community Federation of
San Francisco

Jewish Family & Children's Services
of the East Bay



Jewish Family & Children's Services of San Francisco
Jewish Home, Department of Jewish Life
Jewish Music Festival of the Greater East Bay
Jewish Sports Hall of Fame, Northern California
Jewish Telegraphic Agency
Los Angeles Museum of the Holocaust
Maccabi Games, Jewish Community Center of San Francisco
National Jewish Theater Foundation (Theodore Bikel's Sholem Aleichem Traveling Theater Tour)
Osher Marin Jewish Community Center
Peninsula Jewish Community Center
Stanford Health Services for Jewish Chaplaincy Services
Stanford Jewish Center, Inc.
Traveling Jewish Theater
Women's Alliance of the SF Jewish Community Federation
YIVO Institute for Jewish Research

AMERICAN VALUES SERIES

American Jewish Fund Scholars for Peace in the Middle East Speakers Program

Ayn Rand Institute
Woodrow Wilson Center: Taube Discussion Series on American Values

ISRAEL

American Friends of Koret Israel Economic Development Fund (AFKIEDF)

SPECIAL INTEREST

Center for Traditional Music and Dance
Juvenile Law Center (Theodore Bikel Tribute at Carnegie Hall)
Lucille Packard Foundation for Children's Health*
Mayor Gavin Newsom's "Israel at 60 Mission"
San Francisco International Children's Games
Stanford Law School Sculpture in Rehnquist Courtyard*
Stanford University Medical School Arthritis Foundation*
University of California San Francisco, Osher Center for Integrative Medicine

*Grants from TFJLC Taube Family Fund for Jewish Life, a donor-advised fund at Stanford University, through Jewish Family & Children's Services of San Francisco

JEWISH HERITAGE INITIATIVE IN POLAND

INSTITUTION BUILDING

Centrum Taubego: Taube Center for Jewish Cultural Renewal
Emanuel Ringelblum Jewish Historical Institute
Galicia Jewish Museum
Jewish Culture Festival
Jewish Genealogy & Family Heritage Center
Judaica Foundation/Center for Jewish Culture
Museum of the History of Polish Jews

SCHOLARSHIP & HERITAGE PRESERVATION

American Association for Polish Jewish Studies: Polin Anthology
Association of Jewish Studies

Conference on Memory and the Holocaust in Bialystok
Foundation for the Preservation of Jewish Heritage in Poland
Hebrew Studies in Israel Fellowship for Magdalena Matuszewska
Hebrew University: International Conference on Poles and Jews
Irena Sendlerowa Award
Museum of Jewish Heritage: Auschwitz Jewish Center Fellowship
Polish American Awareness Foundation
Taube Book Publishing Program
Taube Research Fellowship for Konstanty Gebert
Wroclaw University Jewish Studies



EDUCATION & SPIRITUAL LIFE

Beit Warszawa
Birthright Israel in Poland
Chief Rabbi of Poland/Nozyk Synagogue
Czulent (Krakow Jewish Youth Association)
Kielce Shabbaton
Limmud Retreat Program
Moses Schorr Adult Education Center
Paideia Jewish Studies Program in Krakow
Piotrkow Shabbaton
Purim Festival organized by Oy Vay Collective and ZOOM
ZOOM (Warsaw Jewish Youth Association)

ARTS & MEDIA

American Association for Polish Jewish Studies Gazeta Newsletter
Arthur Szyk Society
Batory Foundation Seed Grants Program in Multiculturalism
Bialystok/Podlasie Opera and Philharmonic

Centropa
Czestochowa Society Jewish Arts Program
Hold Onto Your Music, Inc.: production of documentary "We Remember the Polish Jewish People"
Idelsohn Society: production of CD of Eastern European Jewish music
"In the Name of Their Mothers" A Film about Irena Sendlerowa
KUSF 90.3 Polish Radio in San Francisco
Polish Arts and Culture Foundation
"Polish Heroes: Those Who Rescued Jews" exhibition
Simcha Jewish Culture Festival of Wroclaw
University of Michigan: "Odpowiedz... Please Respond" Multi-media Project

CROSS-CULTURAL EXCHANGES

Cantors Assembly Foundation: Concert Tour to Poland and Israel
El Camino Youth Symphony: Tour to Poland
Westbury Group

Taube Family Foundation Grant Commitments 2008-2010

Avenidas
Advocates for Children
ALS Association, Greater Bay Area Chapter
American Diabetes Association
American Enterprise Institute (AEI)
American Friends of Shalva Israel
Anti-Defamation League
ARCS Foundation, Inc., Scholarship Fund
Boys and Girls Clubs of the Peninsula
Breakthrough Collaborative
Breast Cancer Connections
Bureau of Jewish Education
California College of the Arts
Catholic Charities CYO
Cato Institute
Cesar Chavez Academy
Chabad of San Francisco
Child & Family Institute, Sacramento
City of Hope
Claremont Institute
Cleo Eulau Center for Children
College Track, Palo Alto
Committee for a Constructive Tomorrow (CFACT)
Community Breast Health Project
Competitive Enterprise Institute



Conservatory of Flowers
 David Horowitz Freedom Center
 Department of Food & Agriculture, Junior
 Grand National
 East Palo Alto Tennis & Tutoring
 Family & Children Services, Silicon Valley
 Family House, Inc.
 Family Service Agency of San Mateo County
 Filoli Center, Annual Flower Show
 Fine Arts Museum of San Francisco
 Food Runners
 Heritage Foundation
 Hope, Love & Dreams
 Hualalai Ohana Foundation
 Huntington's Disease Society of America
 Independent Women's Forum
 International House at University of
 California, Berkeley
 Investigative Project on Terrorism
 Jewish Congregation of Maui, Inc.
 Jewish Federation of Los Angeles
 Judah L. Magnes Museum
 King's Daughters Ministry, Inc.
 La Casa de Las Madres
 Leukemia & Lymphoma Society
 Linfield College
 Lucille Packard Foundation for Children
 Menlo School
 Molokai Museum & Cultural Center
 National Multiple Sclerosis Society
 National Trust for Historic Preservation
 Northern California Cancer Center
 Nueva School
 Pacific Graduate School of Psychology
 Pacific Research Institute
 Palo Alto University
 Parent Hospital Association, Sonoma
 Peninsula Coalition
 Peninsula Humane Society
 Philanthropy Roundtable
 Positive Coaching Alliance
 Public Safety Support Service
 Ronald McDonald House
 Salvation Army
 Samaritan House
 San Francisco Boys Chorus
 San Francisco Fall Antiques Show
 San Francisco Host Committee
 San Francisco Opera Association
 San Francisco Opera Guild
 San Francisco Symphony
 San Francisco Zoological Society
 San Jose Sports Authority, Sports
 Hall of Fame
 Saybrook Graduate and Research Center
 Shalom School
 Sigma Nu Education Foundation
 St. Christopher Catholic Church
 Stanford University
 Stanford Magazine
 Stern Grove Festival Association
 Streetsmart 4 Kids
 Tawonga Jewish Community Corporation
 UniHi Education Foundation
 University of California, San Francisco,
 Cardiology Center
 US Tennis Association
 University of Southern California
 Vintage Affair
 Wildlife Associates
 Woodrow Wilson Center
 Woodside Community Foundation
 Woodside High School Foundation
 Woodside School Foundation
 World Wings – San Francisco
 Youth Tennis Advantage, College
 Pathway Program



Sponsors of the Jewish Heritage Initiative in Poland

Newton D. and Rochelle F. Becker
Bialkin Family Foundation
Andrea & Charles Bronfman Philanthropies
Consulate General of the Republic of Poland in Los Angeles
Embassy of the Republic of Poland in Washington DC
Joe Feshbach
Anita Friedman and Igor Tartakovsky
Friend Family Foundation
John and Marcia Goldman
Shelley and John Hébert
Nita and Robert Hirsch
Larry Hochberg
Jewish Community Endowment Fund of San Francisco, the Peninsula, Marin & Sonoma Counties
Jewish Community Federation of Silicon Valley
Jewish Family and Children's Services, San Francisco
Kanbar Charitable Trust
Koret Foundation Funds
Harvey Krueger
The Ronald S. Lauder Foundation
Skip & Linda Law
Henry and Lucille Libicki
Moses and Susan Libitzky
Alexander M. & June L. Maisin Foundation
The Marcus Foundation, Inc.
Milken Family Foundation
Morris W. Offit
The Bernard Osher Jewish Philanthropies Foundation of the Jewish Community Endowment Fund
Polish Cultural Institute of New York
John and Lisa Pritzker Family Fund
Irving and Varda Rabin
Sigmund Rolat
Rothschild Foundation Europe
Tom Steinberg
Judy and Michael Steinhardt
Jack and Helen Tramiel
Sam and Tzipi Tramiel





TAUBE
PHILANTHROPIES

1050 Ralston Avenue
Belmont, CA 94002

www.taubephilanthropies.org
info@taubephilanthropies.org

www.polandjewishheritagetours.com
info@polandjewishheritagetours.com